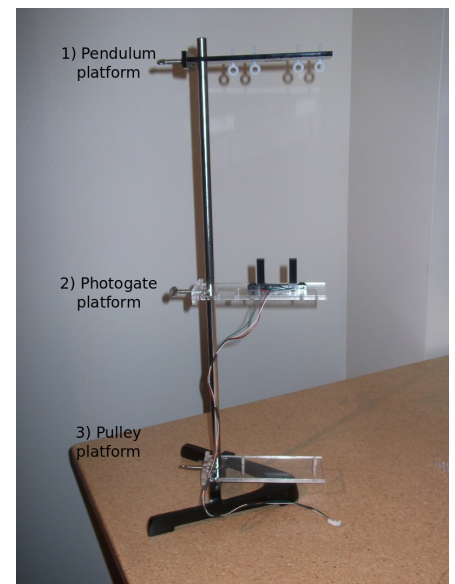
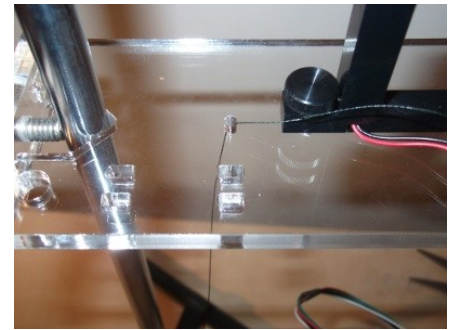


# Assembly instructions

**Step 1:** Secure the pulley, photogate and pendulum platforms onto the lab stand. Make sure the white eyebolts are facing the correct direction.



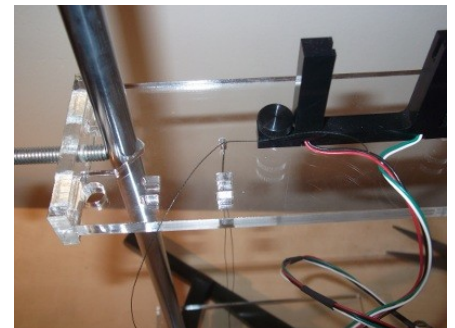
**Step 2:** Loosen the thumb screw on the left-side of the photogate. Wrap one end of pendulum thread around the thumb screw and tighten the screw down. Pass the other end of the thread through the adjacent hole in the photogate platform.



**Step 3:** Pass the thread through the eyebolt on the pulley platform directly below.



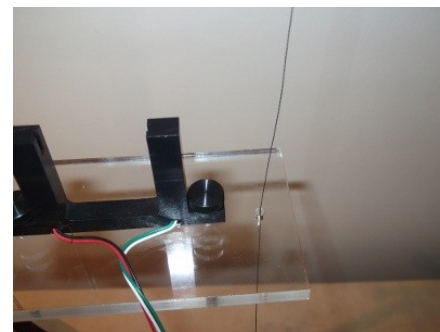
**Step 4:** Pass the thread back up through the same hole in the photogate platform.



**Step 5:** Going from left to right, pass the thread through all 4 eyebolts in the pendulum platform



**Step 6:** Pass the thread down through the hole on the rightside of the photogate platform.



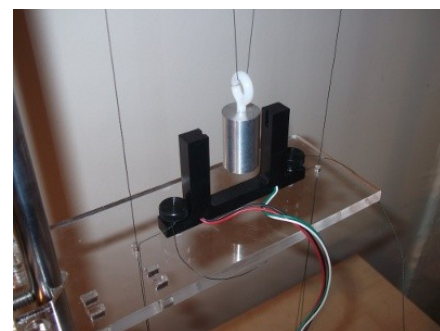
**Step 7:** Loop through the eyebolt on the pulley platform directly below.



**Step 8:** Pass the thread back up through the same hole in the photogate platform and loosely wrap the thread around the thumb screw on the right-side of the photogate.



**Step 9:** Hook one of the pendulums onto the thread between the center eyebolts on the pendulum platform. Adjust the length of the string so that the center of the pendulum sits in the photogate sensor. Tighten the photogate screw.



**Step 10:** Connect the photogate cable to the white 4-pin header on the sensor expansion board and plug the 9V battery clip into the board. Pull the pendulum back a small angle and release. As the pendulum swings through the photogate the period will be displayed.

